

UNU-FTP and CRFM cooperation 2005-2016

Thor Asgeirsson
UNU-FTP deputy director

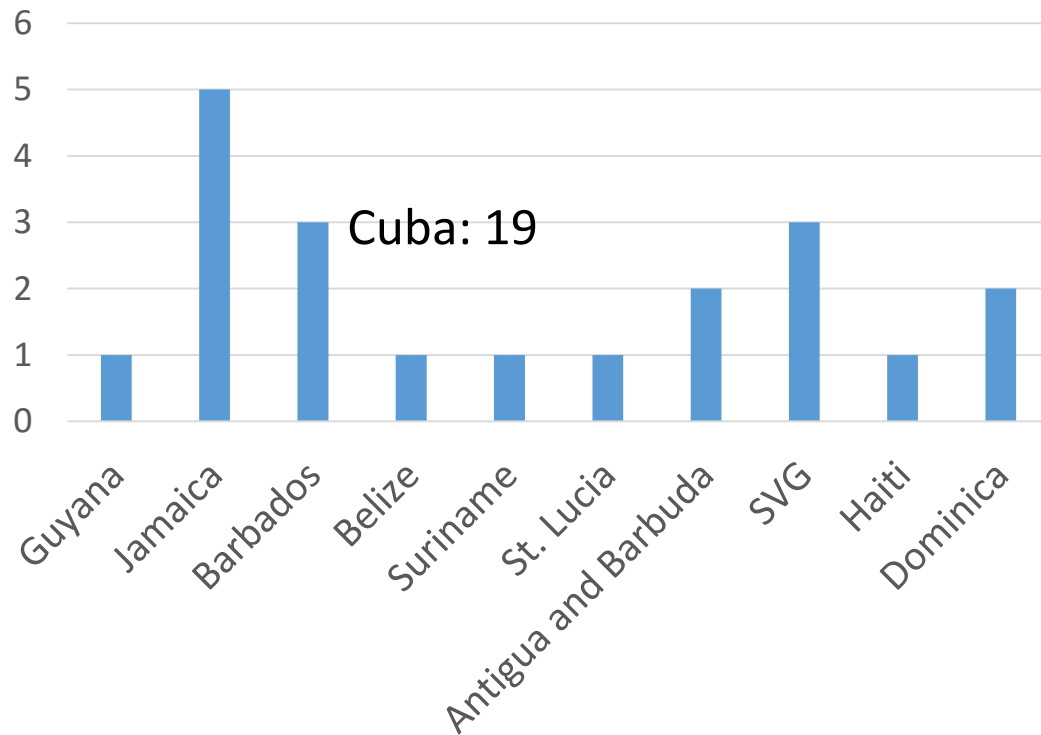


Activities based on MoU

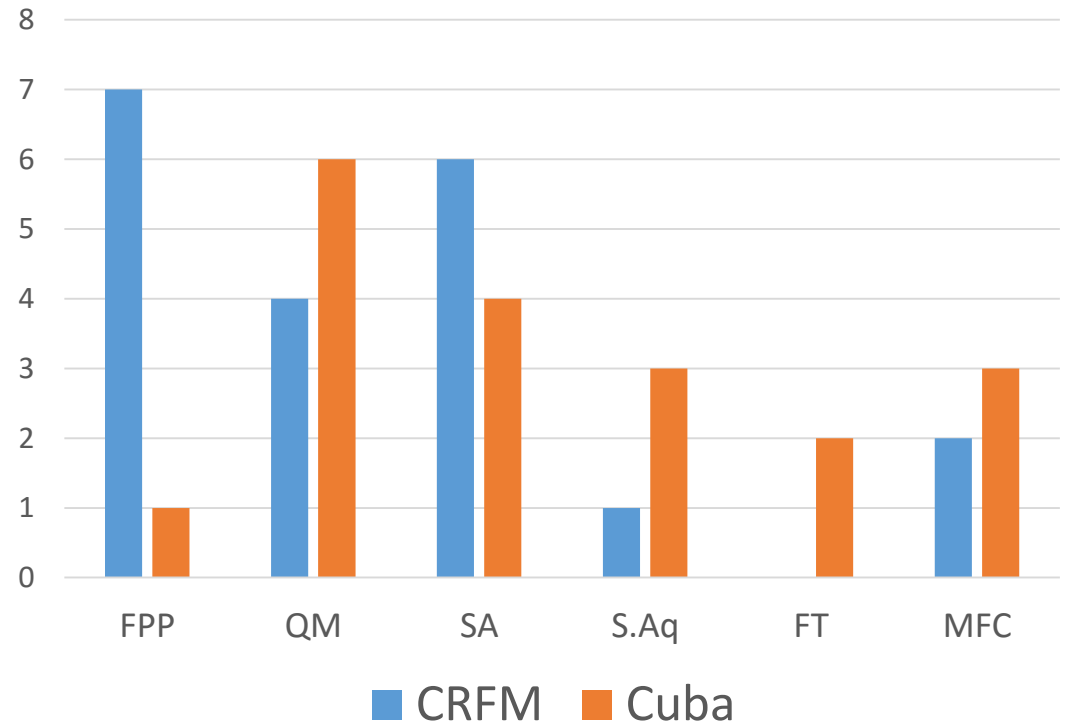
- Fellowships
- Short course development and implementation
- Workshops and study tours
- Scholarships
- Consultancy
- Create opportunities for academic collaboration between Caribbean and Icelandic Universities.

Fellowships (6 months training)

No of fellowships per country



No per line of specialization (CRFM and Cuba)

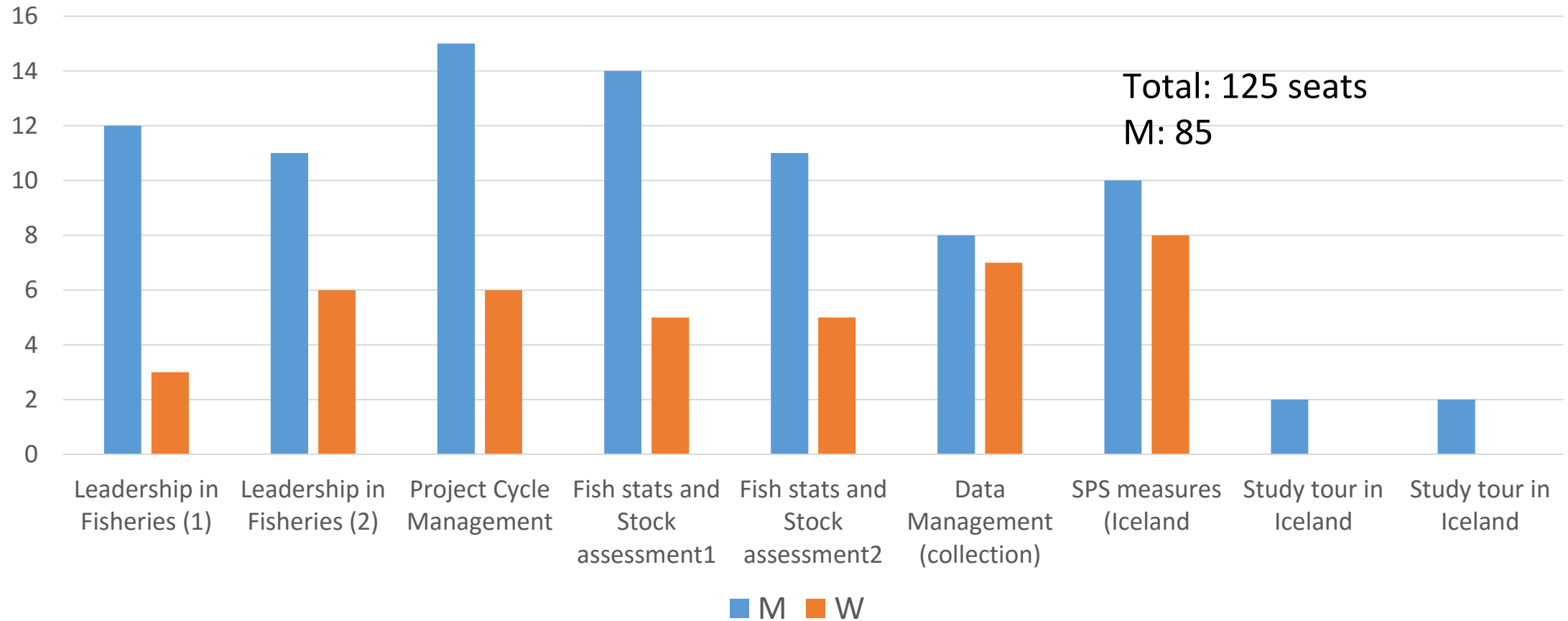


Projects (always relevant to home country)

- Dominica (2015): [Collection, management, and primary analysis of fisheries data in the Commonwealth of Dominica](#)
- Antigua & Barbuda (2012): Towards a management plan for Antigua and Barbuda's Queen conch fisheries: a co-management approach
- Jamaica (2011): [An economic and production assessment for ornamental fish production in Jamaica](#)
- Suriname (2011): [Efficiency of cleaning and disinfection on fish contact surfaces](#)
- Barbados (2010): [Harvesting of Flyingfish in the Eastern Caribbean: A Bioeconomic Perspective](#)

Short courses, workshops and tours

Value Chain Approach in Caribbean Fisheries (2016)



Scholarships (in Iceland)

- Ricardo Morris (Jamaica) MSc. in 2016

Thesis

[University of Iceland](#) > [Verkfræði- og náttúruvísindasvið](#) > [Meistaraprófsritgerðir](#) >

Please use this identifier to cite or link to this item:

<http://hdl.handle.net/1946/23971>

Title	Distribution of Queen conch (<i>Strombus gigas</i>) on the Pedro Bank, Jamaica: Descriptive and Predictive distribution models
Author	Morris, Ricardo Anthony, 1985-
Advisors	Jörundur Svavarsson 1952 Burgos, Julian, 1970-
Keywords	Líffræði Sjávarlíffræði
Submitted	March 2016
Abstracts	Species distribution models (SDM) are useful tools for describing and predicting species ecological role within its community or ecosystem. They are increasingly becoming important in the context of marine resource management and conservation in light of the

Consultancy

- Thor Asgeirsson 2013 at CRFM Secretariat in Belize (5 months)
 - Tasks: Participation in various regional workshops
Assessment of Aquaculture in the region
Training Needs Assessment (report)
- Einar Hjorleifsson 2016 at CRFM Secretariat in SVG (2 months)
 - Tasks: Status of data collection and management
The use of current data for assessment of the status of fish stocks

Academic collaboration

- University of Iceland
- University of Akureyri
- University of Belize
- University of the West Indies – Barbados
- University of the West Indies - Trinidad

Impact

- 10 years of capacity building activities
- Are we on the right track?
- Are member states effectively utilizing training activities and opportunities?
- Are trainees being used?
- Do we see ideas or results from training activities (projects) being implemented?
- Do we see cooperation among trainees – course participants?
- What are the indicators of success?
- Time to conduct an external evaluation
- Should we consider Cuba and promote cooperation among our partners in the Caribbean?